



The evolution has begun
and we are driving it





Purelink Technology, Inc.



Purelink 2002-2009

Purelink manufactures enterprise-class Real-Time Location System, long range active RFID tag and Software used to locate People and Asset in Buildings, Airports, Healthcare Center, Manufacturing Plants and Others Industries.

Purelink products deliver **Location Based Context-Aware Applications** enabling ubiquitous wireless commerce, increase security and safety in enterprise and industrial environment, anywhere, anytime.

We offer our customers the adequate tools to automate business processes, to run on demand inventory, and to increase security and safety procedures.



Purelink Strategic

Honeywell

SIEMENS

CSC

EXPERIENCE. RESULTS.



SITA

THALES





Location-Aware Application Real-Time **People & Asset** Tracking

Applications

1. Surveillance and Control

- Control employees and visitors in restricted areas
- Observe, review where people have been and for how long
- Locate, in real-time, people, assets and equipment
- Protect life & bring assistance to workers in harsh environment

2. Protect and Manage

- Prevent assets and equipment from leaving the enterprise
- Prevent assets or personnel from entering dangerous or restricted areas
- Perform instant inventory on each remote site

3. Increase Business Efficiency

- Implement business rules on asset utilization and processes
- Implement new management and labour practices
- Compare the efficiency of new and old practices





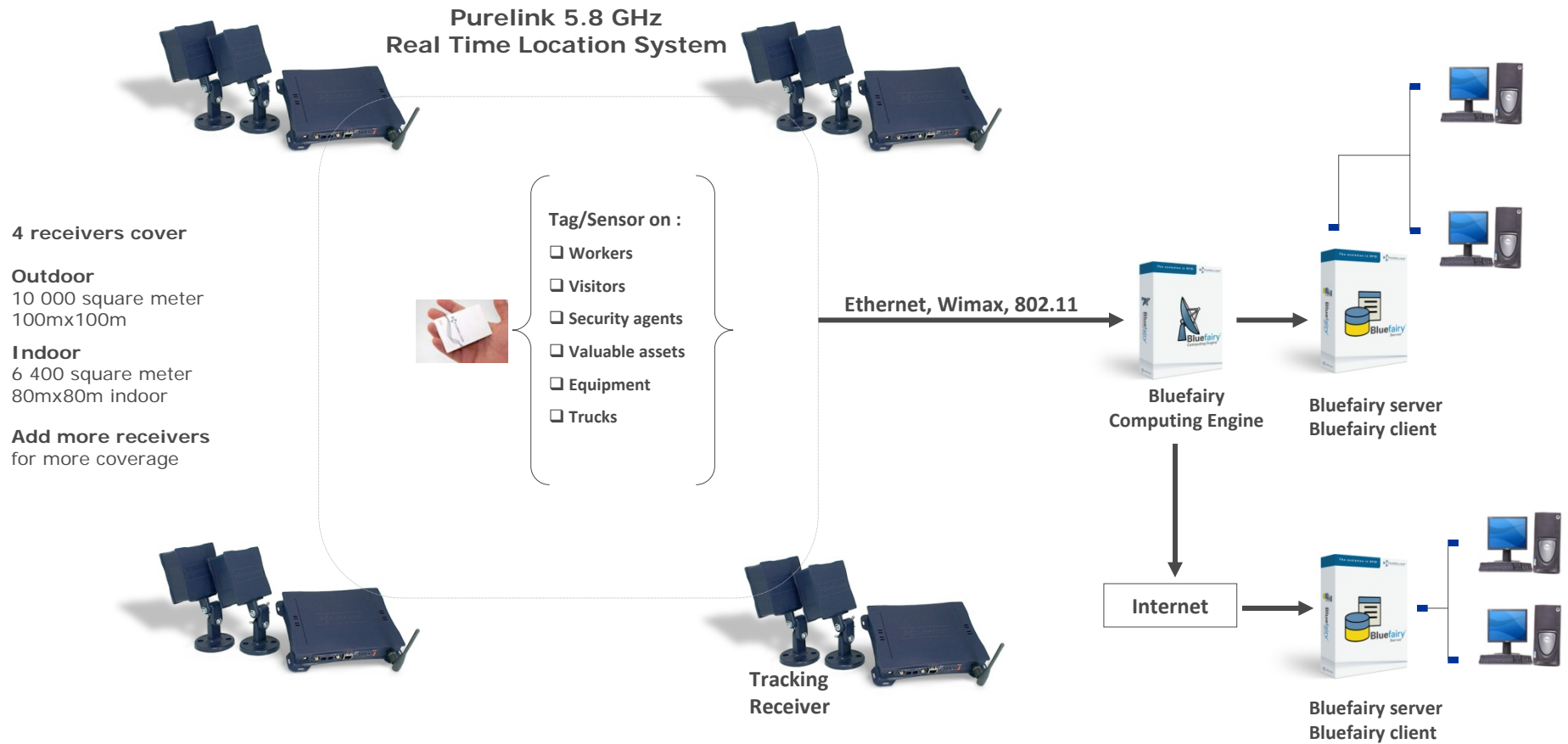
5.8 GHz Real-Time Location System

Locating and tracking 100 000 people & assets
in buildings, yards and warehouses every second





Location-Aware Application Real-Time **People & Asset** Tracking





Location-Aware Application Real-Time **People & Asset** Tracking

PLK-TR015-10 Wireless Tracking Receivers



Purelink Location receiver PLK-TR015-10

- Dual-band receiver 5.8 GHz and 2.4 GHz
- 2 Tracking antennas.
Connection cable & mounting included.
- Power Over Ethernet-enable (POE)
- 802.11 (WiFi) communication link
- Reading capacity of 10 000 tags / second
- Real-Time Location Capacity of 10 000 tags / second
(in a cell of 3 or more PLK-TR015 series)
- 110 V - 220 V power supply. POE module included.





Location-Aware Business Application Real-Time **People & Asset** Tracking

nanoEdge™ PLK-NT030 Series Active RFID Badge

Location / Tracking of workers & visitors

Long-range active RFID badge. Designed for safety and security applications. 4.5 mm thick. Badge format. 200 m range. 5-year battery life at 1 location blink/s.



PLK-NT030 series





Quality,
Delivered
On Time

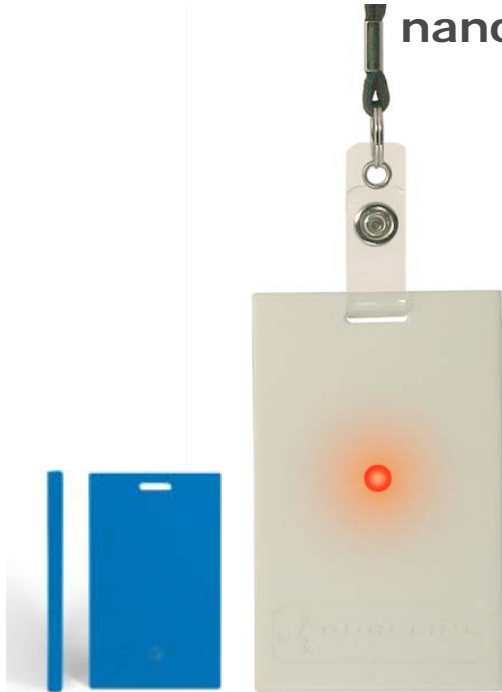
nanoEdge™ PLK-NT030 Series Active RFID Tags

PLK-NT030-20

One way communication tag

Options:

- Two ways communication (Uplink & Downlink)
- Call button
- Alerting sound
- Alerting light (DEL)
- Motion sensor
- Temperproof sensor
- Temperature sensor
- Vibration sensor
- Interface to connect different sensors (Gas, Pressure)



PLK-NT030 series

Location / Tracking of workers & visitors

4.5 mm thick. Credit card format. 200 m range. 5-year battery life at 1 blink/s.





Location-Aware Application Real-Time **People & Asset** Tracking



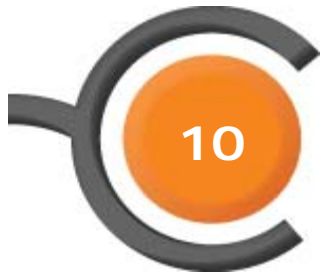
Bluefairy™
Operating System
for real-time location system
People & Asset Tracking

Bluefairy™ Suite 4.5

- **Bluefairy™** Computing Engine
- **Bluefairy™** Server
- **Bluefairy™** Fundamental
- **Bluefairy™** Observer
- **Bluefairy™** Inspector
- **Bluefairy™** Review
- **Bluefairy™** Reporter

The first RTLS suite that enables your vision of Location Aware Applications, Ubiquitous Wireless Commerce, Control of Safety Protocols and Security to shape your enterprise.





Location-Aware Application Real-Time **People & Asset** Tracking

Building Security
Workers Time Attendance

Real-Time Location of People & Asset

- 10 000 locations/second
- 1 to 3 meters accuracy
- Entirely wireless solution
- 7 software for Location Based Applications



Bluefairy™ suite



Location Receiver



Tracking Badge





Mission critical Steel Coils Location & Tracking

Purelink nanoedge™ tags and Bluefairy™ software suite locate steel coils every second, every day to increase logistic process in plant.



Maintain Safety Protocols

Location Based Safety Services

Linking People & Asset together into Location-Based Application.

Purelink NanoEdge™ tags and Bluefairy™ suite follow the steps of workers, every second, every day to ensure their safety. Our products help to maintain the best safety and security practices that save life!



**Automatic Mustering Report
Real-Time Accounting
Dense Wireless Sensor Net**



Location-Aware Business Application Real-Time **People & Asset** Tracking



**Binding Location Data &
Sensor Driven Information into
Location Based Application for
Industrial Environment**



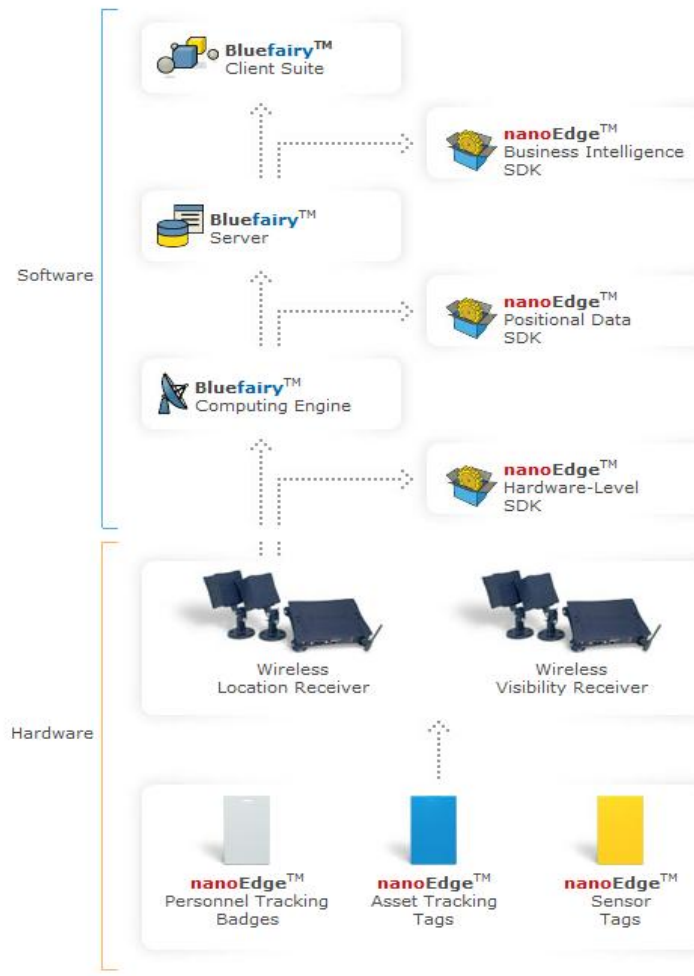


Purelink

Quality Delivered



Product Map





Location-Aware Application Real-Time **People & Asset** Tracking

Airport, Seaport
Public Security



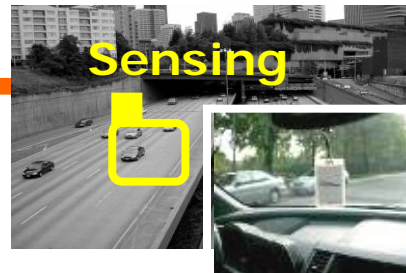
Medical Equipment, Patient
& Staff monitoring



Electronic care



Vehicle tracking & Sensing
Intelligent Expressway System





The evolution has begun
and we can help

Purelink Technology, Inc.

3333 Queen-Mary Road, suite 525
Montreal, QC, Canada

Tel: 1-514-788-0088

Fax: 1-514-788-0080

info@purelink.ca

sales@purelink.ca

www.purelink.ca

