

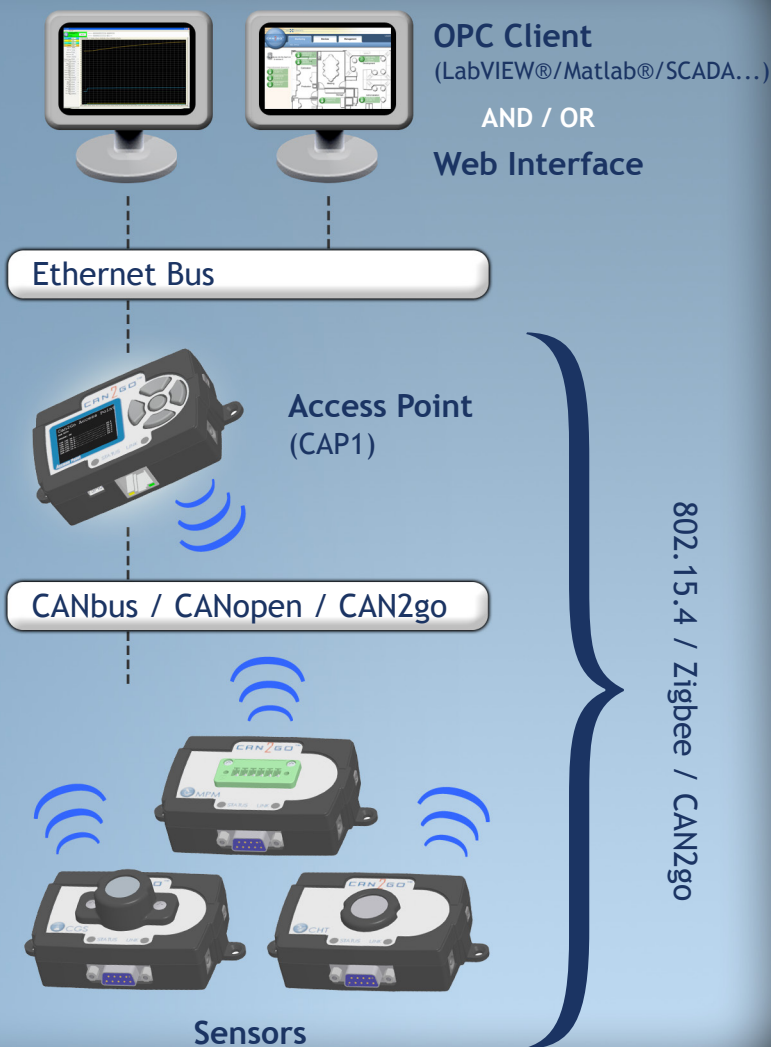
Connect. Control.

With CAN2GO technology, it's that easy.

2009 CAN2GO Catalog Preview 

Take command of monitoring and control with CAN2GO

CAN2GO offers industrial-grade solutions for **monitoring and control** in a format accessible to all. Our sensors and controllers are **autonomous and wireless**. Flexibility, reconfigurability and scalability make CAN2GO fit for small and large needs, in clean-room environments or industrial settings alike. The **plug-and-play** functionalities of CAN2GO reduce overhead, operating costs and lead times, and facilitate in-house network management or customization.



Our technology is compliant with the **Zigbee**, **CANopen** and **OPC** standards, allowing a fast deployment at low cost and using little power.

Monitoring solutions for you

Our technology is ideal for residential, commercial and industrial use.

We can deliver solutions for:

- ▶ Smart buildings / Building automation
- ▶ Laboratories
- ▶ Farming / Agro industry
- ▶ Factories of all kinds

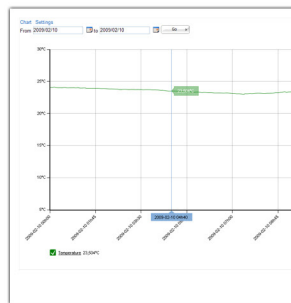


One technology. No limits. Scaleable technology that fits in the palm of your hand.

We believe things should work when you connect them. That's why we offer a web application which runs directly off the CAP1 Access Point to monitor and control your can2go network. No installation, no hassle.

Monitoring At a Glance

Quickly grasp what kind of sensors are deployed where with the map overlay. Access graphical data history by selecting any sensor. Change a sensor's settings with a few clicks. Every bit as simple as navigating on the web.

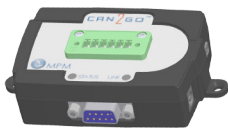


Device	Location	Device Serial Number	Device Model	Value	Unit	Status
A000001	1	A000001	CTS1	Temperature	15.000	°C
A000002	1	A000002	CTS1	Temperature	15.007	°C
A000003	1	A000003	CTS1	Temperature	15.011	°C
A000004	1	A000004	CTS1	Temperature	15.008	°C
A000005	1	A000005	MPM1	Plant 1 Count	01	min
A000006	1	A000006	MPM1	Along Spur 1	1.700	V
A000007	1	A000007	MPM1	Along Spur 2	1.900	V
A000008	1	A000008	MPM1	Along Spur 3	1.800	V
A000009	1	A000009	CTS1	Temperature	15.008	°C
A000010	1	A000010	CTS1	Temperature	15.010	°C
A000011	1	A000011	CTS1	Temperature	15.012	°C
A000012	1	A000012	CTS1	Temperature	15.014	°C



CAP1 - Access Point

The CAP1 offers OPC data access, on-board web-software and integrated web server, crisp OLED screen and Ethernet interface on a platform no bigger than a deck of cards.



MPM1 - Multi purpose module

The MPM1 offers a low-cost, high precision solution for driving electromechanical devices such as valves, solenoids, relays, actuators, positioners and thermal devices such as heaters and lamps. It also incorporates I/O channels and analog inputs. It combines both wired and wireless access through its CANopen and ZigBee standard interfaces.

Our sensors: Wireless & Autonomous

Monitor your environment 24/7 with wired or wireless sensors. Alone or in networks, they will provide you with the information you need, when you need it.

- ▶ CTS1 - Thermocouple Temperature
- ▶ CTS2 - RTD Temperature
- ▶ CTS3 - Thermistor Temperature
- ▶ CHT1 - Temperature & Humidity
- ▶ CGS1 - Gas
- ▶ CGS2 - Infrared Gas
- ▶ APS1 - Pressure
- ▶ FST1 - Flow (w/Sensirion)

